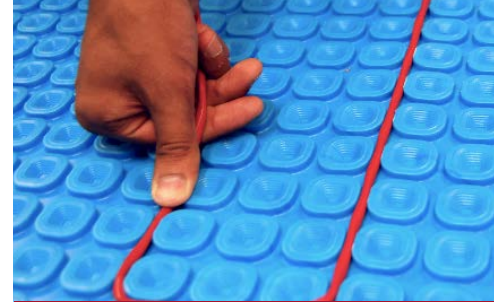


Nuheat Cable UNCOUPLING MEMBRANE

Offering the ultimate in installation flexibility, Nuheat Cable Floor Heating Systems can be installed using an uncoupling membrane.

EASE OF INSTALLATION FOR NEW CONSTRUCTION OR RENOVATIONS

- Cable is waterproof and does not require a waterproofing membrane on top.
- Nuheat Cable fits securely within the 5.5mm membrane system, simply thinset over top and you can begin tiling immediately.
- Higher watt density means higher maximum floor temperatures and faster heat-up times.
- Available in 120V and 240V.
- Only one floor sensor instead of two required.
- The Nuheat Mat Sense Pro fault detector alerts installers if heating cable is damaged during installation.



Vary the spacing of the heating cable to deliver 10, 12 or 14 watts/sq ft.



Nuheat Cable's thin cold lead, splice connection and floor sensor are easily embedded in thinset.

PRODESO HEAT MEMBRANE CHART[†]

NUHEAT CABLE 120 VOLT KIT

Model #	Square Foot Coverage			Length (ft)	Total Watts
	2/3/2 pillars*	3 pillars*	2 pillars*		
	12 watts/sq ft	10 watts/sq ft	14 watts/sq ft		
N1C008	8	9	6	29	80
N1C012	12	14	10	47	138
N1C015	15	17	12	57	170
N1C025	25	30	21	98	299
N1C030	31	36	25	120	343
N1C040	38	45	31	148	442
N1C050	48	57	39	188	562
N1C060	60	71	49	234	719
N1C070	68	81	55	265	810
N1C080	82	97	66	318	947
N1C085	86	102	69	334	1021
N1C095	97	115	78	377	1161
N1C110	109	129	88	423	1299
N1C120	122	145	98	474	1461

*pillars of the uncoupling membrane

NUHEAT CABLE 240 VOLT KIT

Model #	Square Foot Coverage			Length (ft)	Total Watts
	2/3/2 pillars*	3 pillars*	2 pillars*		
	12 watts/sq ft	10 watts/sq ft	14 watts/sq ft		
N2C015	14	17	12	56	165
N2C020	21	24	17	80	224
N2C025	26	31	21	102	302
N2C035	35	41	28	136	403
N2C045	46	54	37	178	523
N2C055	53	63	43	207	632
N2C065	64	76	52	250	742
N2C070	71	84	58	277	842
N2C085	86	102	69	334	1020
N2C090	92	109	74	358	1102
N2C100	101	120	82	393	1211
N2C120	121	145	98	472	1427
N2C135	136	162	110	529	1621
N2C145	144	172	116	561	1704
N2C160	162	193	131	630	1914
N2C170	171	204	138	665	2054
N2C190	195	233	157	757	2314
N2C215	219	261	176	849	2589
N2C240	246	293	198	953	2905

[†]Prodeso is owned by Progress Profiles America Inc. which is not affiliated with Pentair/Nuheat.

APPROVED INSTALLATION & WARRANTY

Combine the benefit of an underlayment membrane with the warmth and comfort of underfloor heating. Nuheat Electric Radiant Heating Cable is an approved cable under the **Prodeso Heat Membrane 10-year warranty. Nuheat Cable Floor Heating Systems also comes with a 25-year warranty** and is an ideal heating solution in the Prodeso Heat Membrane due to the thinner cold lead, lower profile and 33 cable kits available in 120V or 240V.



THE SIGNATURE IS THE INDUSTRY'S FIRST WIFI-ENABLED FLOOR HEATING THERMOSTAT.

This universally compatible thermostat provides an easy set-up wizard and wireless access to a full suite of features such as an energy usage display, weather forecast and temperature controls, all from an iOS/ Android app or web browser.

FAST FACTS:

- WiFi-enabled
- 7-day programmability
- 3.5" Color touchscreen
- Dual-voltage (120V/240V)
- Energy usage monitor

Pentair and Nuheat are owned by Pentair or its global affiliates. All other trademarks are the property of their respective owners. Pentair reserves the right to change specifications without prior notice.

© 2015 Pentair.